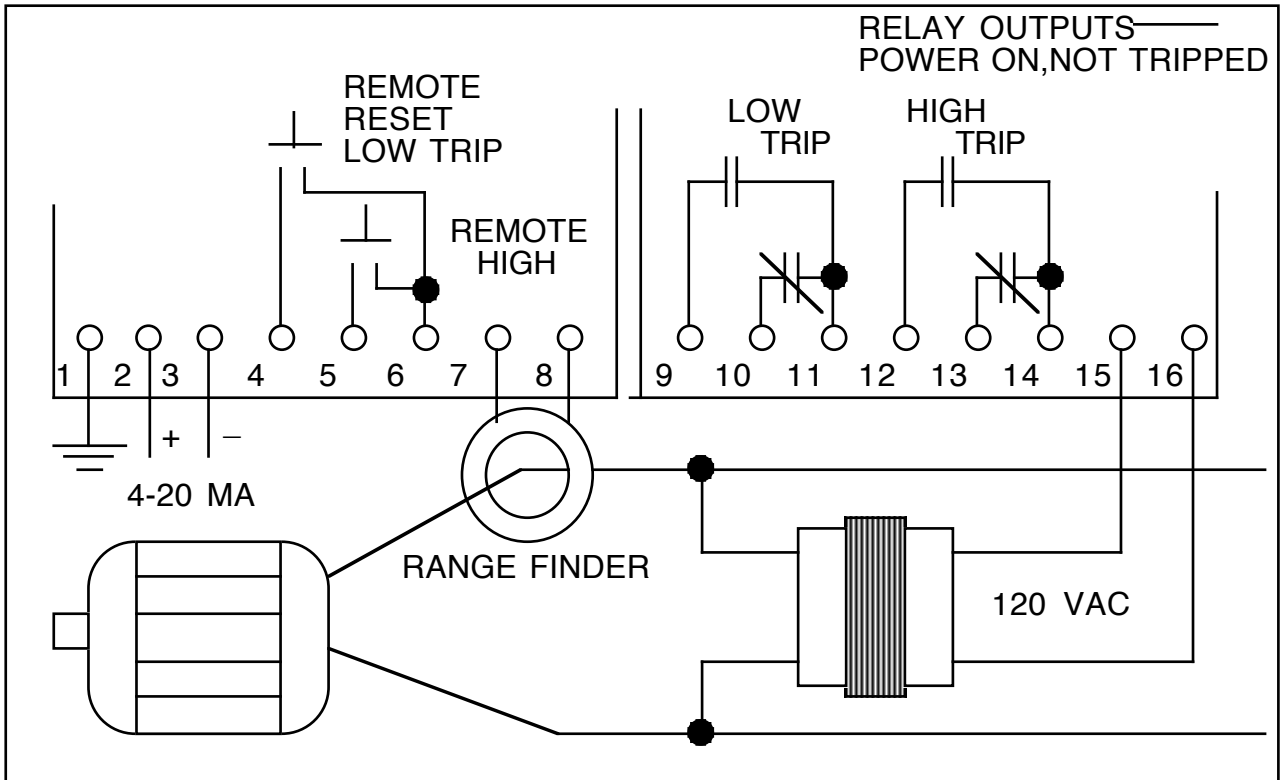


# PMP-25 SINGLE PHASE



\* VOLTAGE TRANSFORMER NOT REQUIRED FOR 120V MOTORS

## FULL SCALE CAPACITY AT 120 VOLTS

THE RANGE FINDER HAS 6 MOTOR SIZE CHOICES. SELECT ONE THAT IS EQUAL OR LARGER THAN YOUR MOTOR. THIS WILL LEAVE SOME HEADROOM.

MOTOR SIZE	FULL SCALE CAPACITY	% FULL LOAD	RANGE FINDER SWITCH	TURNS
1/8	.125	100	1 ON	4
1/4	.25	100	1 ON	2
1/3	.5	152	1 ON	1
1/2	.5	100	1 ON	1
2/3	.66	100	2 ON	1
1	1.00	100	3 ON	1
1 1/4	1.25	100	4 ON	1
1 1/2	1.75	117	5 ON	2
2	3.5	175	5 ON	1
2.5	3.5	140	5 ON	1
3	3.5	117	5 ON	1
5	7.0	140	6 ON	1

## MULTIPLIERS

FOR NOMINAL VOLTAGES OTHER THAN 120 VOLTS MULTIPLY 120V FULLSCALE BY:

240V = 2  
 380V = 3.2  
 415V = 3.5  
 480V = 4

FOR KILOWATTS MULTIPLY FULL SCALE HP X .746