

NEW! Fast Response Compact Digital Load Controls

LOAD CONTROLS PROTECT VALUABLE EQUIPMENT FROM PROBLEMS AND DAMAGE

- Overloads
- Loss of Load
- Jams
- Missing Tools
- Obstructions
- Misplaced Parts
- Sudden Load Change

TRUE POWER LOAD DISPLAY

Versatile - Can Display

- % of Full Load
- Horsepower
- Kilowatts

FAST RESPONSE

- 10 times faster than typical load controls

EASY FRONT PANEL SETUP

- See all of your settings with a touch of a button

RUGGED NEMA 4 ENCLOSURE

Designed to fit in many places

- On Starter Door
- On Raceway
- Panel Mount - With Bezel Kit
- On Wall - With Standard Outlet Box Kit

COMPACT

- Only 3 1/4" x 6 1/4" x 2"

4-20 MILLIAMPER ANALOG OUTPUT

Send load information to

- Computers
- Chart Recorders
- Data Loggers



ADJUSTABLE SET POINTS

Low Trip - When load is below the Low Trip, the built-in relay will trip.

High Trip - When the load is above the High Trip, the built-in relay will trip.

RATE OF CHANGE

- Trips when rate of load change exceeds the selected rate.

FILTER OUT NUISANCE TRIPS

- Adjustable Digital On-Delay Timers - Trip won't activate until the selected delay time is exceeded.
- Adjustable Digital Start-up Timer - No false trips while motor is starting.

3 WAYS TO RESET

Local - Button on Control

Remote - With Low Current Switch or Relay

Automatic - With Jumper

Latching Relays - You choose when to reset

Form C Relays - Give you both Normally Open and Normally Closed Contacts



UNIQUE RANGE FINDER TOROID

- One sensor for capacities from fractional up to 50 HP (Up to 150 Amps for CR-150)
 - Change capacity with Dip Switches
 - Use optional Current Transformers for big motors



PFR-1550

Single Set Point Load Control

- Overload or Loss of Load
- Power Sensing for best sensitivity
- High Trip or Low Trip selectable



ROC-50

Rate of Change Load Control

- Ideal for conveyors and material handling equipment
- Detects sudden changes in load
- Power Sensing for best sensitivity
- Rate of Change Set Point plus Gross Overload Set Point



PFR-1750

Two Set Point Load Control

- Sound alarm and stop process
- Power Sensing for best sensitivity



CR-150

Single Set Point Current Sensor

- Good for overload protection
- Simple installation

FREE 30 DAY TRIAL AVAILABLE

Model PFR-1550 \$495

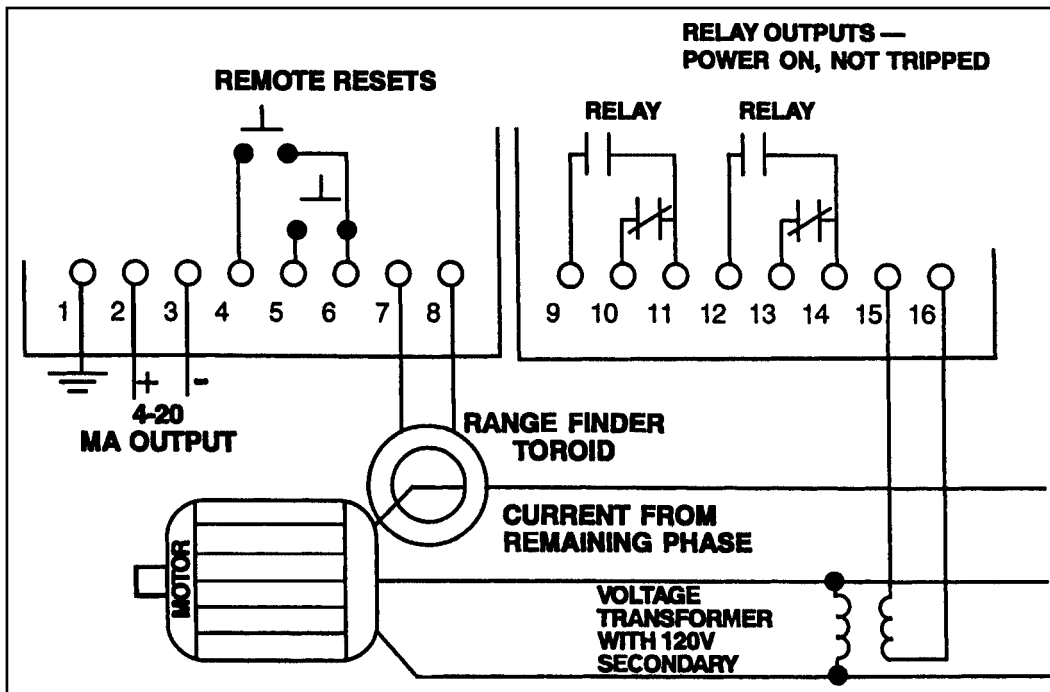
Model ROC-50 \$600

Model PFR-1750 \$600

Model CR-150 \$295

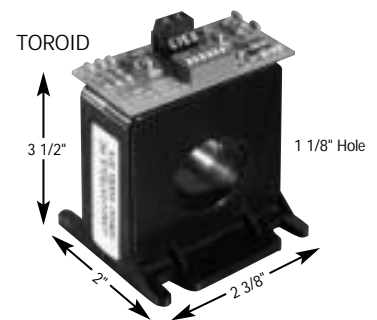
- Add \$40 For Current Transformer for Motors Larger than 50 HP
 - Specify Bezel Kit for Panel Mount
 - Specify Outlet Box Kit for Wall Mount
 - Optional Lockout Switch \$50
- Rear switch disables Enter button*

Typical Connections



SPECIFICATIONS

Enclosure	Glass-filled Polycarbonate NEMA 4, 4X (3 1/4" x 6 1/4" x 2") (83mm x 160mm x 54mm)
Mounting Options	On door, in cabinet Panel mount with Bezel Kit On wall with outlet Box Kit
Wiring	Unpluggable Terminal Strips on Rear
Load Display	.4" LED 3 Digit
Capacity	To 50 HP directly through Toroid (150 Amps for CR-150) Larger motors with Current Transformer & Toroid Change capacity with Dip Switches
Timers	Start Up and Trip Delay(s) 0-90 second 0-2 second in .1 second increments 2-90 second in 1 second increments
Relay Output(s)	(1) or (2) Form C 3 AMP @ 300 VAC or 1/8 HP @ 240 VAC Latch when tripped
Analog Output	4-20MA; powered by the Control, 500 OHM maximum connected impedance
Response Time	25 Milliseconds
Temperature	0 C - 55 C
Power Consumption	2 VA



CALL FOR FREE
INSTALLATION BOOKLETS!

Variable Frequency Power

MEASURING POWER ON THE OUTPUT OF A VARIABLE FREQUENCY DRIVE IS A SPECIAL CASE

- Voltage and Current Transformers do not work at low frequencies
- The waveform on both the input and output of a drive is distorted

The Universal Power Cell uses Hall Effect sensors that are not affected by odd waveshapes or frequencies. Also, no Voltage or Current Transformers are used. It works on the output of a drive and can be combined with a modified "V" Series Load Control.



53 TECHNOLOGY PARK ROAD
STURBRIDGE, MA 01566
Phone 508-347-2606
Fax 508-347-2064
11/2001